



You and Your Friends are Cordially Invited to The Annual Victorian Open House

At
Pine Grove

405 Oakland Avenue
Pontiac

Sunday, December 5, 1976
1-4p.m.

Music and Refreshments

Admission
Adults \$1.00 Children 50c



Date is set for hanging of greens

The traditional hanging of the greens is set for Wednesday, December 1, at 10 AM. For the eighth year, friends and members of the Oakland County Pioneer and Historical Society will gather at Wisner House to decorate Pine Grove for the Victorian Open House.

Tea and coffee is provided at noon for the workers. It's usually a day long chore to hang the holly, put up the tree and bring out the ornaments—but it's fun. Just ask anyone who has ever participated. If you wish to join us on Wednesday, December 1, just fill out the enclosed card in the proper space and mail to Wisner House. An envelope has also been provided. Be sure to wear old clothes and bring your lunch.



The fenced area between Pine Grove and the Wisner public school is open for parking. Also the Oakland Avenue United Presbyterian Church has kindly consented to let us use their parking lot across the street.

SEE PAGE 4 FOR ADDITIONAL INFORMATION

OFFICERS
AND BOARD OF DIRECTORS
OAKLAND COUNTY PIONEER AND
HISTORICAL SOCIETY

President: Faye M. Donelson
President/Achivist Emeritus:
Mrs. Donald E. Adams
Vice Presidents: Mrs. Edwin L. Adler
Charles Martinez
Secretary: Mrs. Russell Pickering
Treasurer: Mrs. Richard Balmer
Resident Agent: Edwin Adler

Term exp. 1977

Mrs. Robert Anderson
Harold Balmer
Mrs. James Burke
George Googasian
John Harris
Richard Hendershott
Malcolm Kahn
Merritt Olsen
Calvin Patterson
LaBar Stewart Jr.
Peter Tenuta
Joan Warrington
Robert Warrington
Charles Williams

Term exp. 1978

Carl Bird
Mrs. Clarence Clohset
Cecil Dumbrigue
Richard Hewitt
Mrs. Douglas Hoard
W. E. C. Huthwaite
Mrs. William Jackson
Mrs. Allen Priestley
James Renfrew
Mrs. Booker Yancey

Term exp. 1979

P. G. Burnet
Maurice Cole
Frederick Gibson
Mrs. Charles Hudson
Mrs. Anna Baker Lane
Mrs. Ronald McAlpine
Miss Mary Nephler
Mrs. Calvin Patterson
Mrs. L. D. Presnal
Mrs. William Rachwal
Mrs. Charles Roush
Mrs. Ralph Sievewright
Mrs. Charles Williams
Mrs. Richard Wright



The President speaks



Dear Members,

Greetings from your new president. Everything is very new to me so I am going to need all the help you can give me. I hope you will drop in anytime you have a chance and see what progress we are making on the Carriage House. The boys from NEOVEC work from 8:30-10:00 and a different group from 12:30-2:00 each afternoon. We hope to have it enclosed by winter (which is already here by the looks of the snow on the ground). If you are handy with a hammer drop in and help nail the siding on when we are ready, or just come and be a sidewalk superintendent. Remember, it is your project, not mine. We are going to need more contributions to finish the (barn) and more life memberships to build up our endowment fund so we will be able to pay the increased operating expenses.

The following committees have been appointed:

Victorian Christmas
Marie Sievewright and Ernestine Williams. Charles Williams and James Renfrew.

Annual Dinner
Fran Anderson, Mary Nephler, Calvin Patterson and Malcolm Kahn.

Carriage House
Gretchen Adler, Fave Donelson, LaBar Stewart and Charles Martinez.

Archeological
Charles Martinez and Faye Donelson.
Endowment
P. G. Burnett and Betty Adams.
Standing Committees
Membership: Marian Roush
Legal Adviser: Richard Hewitt
Grounds: Cecil Dumbrigue and Merritt Olsen.
Library: Marie Sievewright
House: Edna Burke, Betty Hoard, Thelma Wright, Gretchen Adler, Ruth Priestly
Educational Consultants: Dorothy Yancy, Dick Hendershott, Maurice Cole.
Guides: Connie Lektzian, Mary Rachwal, Elsie Patterson, Janet MacAlpine, Ellen Rice and Miriam Foxman.
Store: Stella Presnal
Schoolhouse: Margaret Ann Jackson and Anna Lane
Resident Agent: Edwin Adler
Summer Kitchen and Root Cellar: Lottie Hudson and Ernestine Williams.
Maintenance and Repair: La Bar Stewart, Charles Williams, Jack Harris, and Harold Balmer.

I hope all board members will make it a point to come to the November 17. board meeting.

Will each member get all of your friends and relatives to join us for the Victorian Christmas so that we can make it a truly gala affair.

See you at Wisner December 5!

Endowment Fund grows

In April 1975, the OCPHS Development Committee recommended the establishment of an Endowment Fund. This was given the full approval of the Board, and has proved popular with the membership.

The interest of this fund is to be used to assure a continuation of monies to maintain Pine Grove.

Contributions may be made in the form of a direct gift of \$5.00 or more. A \$100.00 donation entitles the donor to a \$100.00 Life Membership.

Since the last Gazette publication in July, the following have contributed.

Mrs. Chauncey Harris, life membership

Mrs. Howard W. Huttenlocher,
life membership

Memorial received for Mrs. Helen Mae Parker from John Harris

Memorial received for Mrs. Esther G. Barton from: Capt. (Ret.) & Mrs. Douglas Hoard

Memorial received for Dr. Aaron D. Riker from: Faye M. Donelson and Mrs. Marian L. Bell

Will you be taking pictures?

WILL YOU BE TAKING PICTURES?
Victorian Open House, with all its colorful costumes and decorations, has special appeal for shutter bugs. We would appreciate donations of colored slides

for use in future presentations about Pine Grove, or black and white pictures that can be used in Gazette publications. Colored snapshots can be used in our scrapbook of the Wisner House.

Carriage House reconstructed



NEOVEC students- working and learning.

BY GRETCHEN ADLER

The reconstruction of the Wisner Carriage House is out of the ground and on its way. On October 7, the basement was excavated and the foundation work began shortly after. Although the original plans called for wood beam construction, steel beams were substituted. The committee and the construction advisor felt that steel beam and post construction would add greater stability to the building.

The students of NEOVEC (Northeast Oakland Vocational Education Center) have been working faithfully under the

direction of their teacher Jim Johnson. Due to the exceptionally cold weather, they are to be commended on their hard work and faithful attendance.

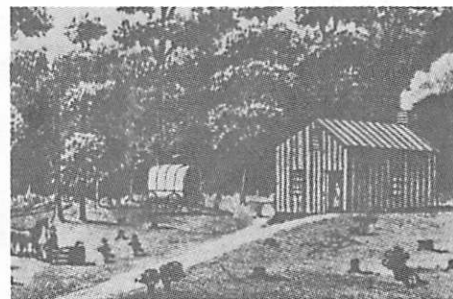
Francis Lohff has acted as our supervisor and has spent many hours in reviewing, checking and measuring as well as aiding the committee.

As construction continues, bids are being requested for electrical, plumbing and heating. Rough grading was completed before the freezing weather began to aid in construction.

Commission publishes sketch

"Out of Small Beginnings," a Bicentennial Historical Sketch of Oakland County, Michigan, 1815-1976, has just been published by the Oakland County American Revolution Bicentennial Commission. The sketch is based on a manuscript originally prepared by J. Carlton Starbuck for the Oakland County Planning Commission, subsequently condensed by Richard Lee Waddell, and finally rewritten and edited by the History Committee of the Bicentennial Commission.

The History Committee, selected on recommendation of the Oakland County Pioneer and Historical Society, consisted of Elizabeth S. Adams, chairperson, Maurice F. Cole, Delorise M. Kumler, James Renfrew and George N. Skrubbs. Many of the illustrations used in the paperback came from the Society's photograph collection. Copies are available at \$2.00 from the Society's Pot Pourri Shoppe.



Christmas in the Schoolhouse

By MARGARET A. JACKSON

The one room schoolhouse at Wisner will once more be filled with the spicy smells of hot cider, Christmas trees and homemade cookies as it opens its friendly doors to all visitors to the Victorian Christmas celebration.

The traditional tree will be trimmed in festive Bicentennial theme, with the Watertford Senior Citizens furnishing the original trims created in their center. This activity will be carried out under the direction of Betty Hegedus, Arts & Craft director of the Center. Any

Senior Citizen of Oakland County who desires to participate in the hanging of the greens may come to Wisner Home from 10 A.M. to 3 P.M., Dec. 1. The more the merrier.

We plan to trim the cases with antique toys. If you have any toy which qualifies as an antique, at least 50 years old, please bring the item to Wisner anytime. If you have a picture of the recipient, it would add to the interest. These items will be under lock and key and should be picked up 9:30 to 3:30 Dec. 13 through 15th. We are counting on your interest to make our last Bi-centennial display and event memorable.

At the dedication of the belfry during the Ice Cream Social August 1, 1976, the Honorable Judge Donald E. Adams led all in the Pledge of Allegiance to the flag and Mrs. Charles Hudson, past schoolteacher of the Drayton Plains School reminisced about experiences in the one-room schoolhouse. A program was presented in the school which consisted of a reading by Judge Adams on the Declaration of Independence, a recitation by Virginia Hustead, a song by the entire audience, a reading by Ernestine Williams on the rules for teachers in the 1800's King of the Cannibal Islands led by Margaret Ann Jackson and the reading of "CASEY AT THE BAT" by William E. Jackson.

All who participated enjoyed the program.



Left to right...Greta Sherman, Fran Wampfter, Elsie Borly, Ral Link and Beth Gustafson.

Victorian holiday planned

Sunday, December 5, has been selected as the date for the annual Victorian Open House. On that day, Wisner House will be open from one to four in the afternoon. Throughout beautifully decorated Pine Grove, there will be the sound of special Christmas music.

Mrs. J. Frederick Johnson will play the piano and the organ, and she and Merritt Olsen are planning duets for the organ and dulcimer.

The Motorman Corps, in the charge of their president, Mr. Richard Johnson, will bring quartets to sing Christmas and Victorian songs. These troubadours will be performing in the 'company' parlor.

Co-chairwomen for the event are Mrs. Ralph Sievewright and Mrs. Charles Williams, assisted by many member volunteers. A great deal of work and planning must go into this very special day, and it's no easy job to dove-tail everyone's efforts.

The scent of hot mulled cider will be coming from the schoolhouse. Of course, there will be cookies to go with the cider. On the enclosed card, there is space to mark for donations of cookies. As always, we rely on our members and friends to provide them. If they are well wrapped or placed in tightly covered boxes, the cookies may be brought in as early as Friday, December 3.

Five tickets of admission are being sent with this Gazette - and the price of admission has not been raised. It is still \$1.00 for adults and 50 cents for children under 18. Tickets may also be purchased at the door.

Return money or unsold tickets to the Wisner House, 405 Oakland Avenue, Pontiac, Michigan, 48058 before December 5 - there is an addressed envelope for your use. Make checks payable to Lillian Balmer, Treasurer.

Costumed guides are needed in hour long shifts throughout the afternoon. During the Victorian Open House, guides interpret one area, and then steer the visitors on to the next room or exhibit. Since some changes have been made recently in displays and furnishings, it is advisable for all guides to come in ahead of December 5, and bring their information up to date.

All guides are encouraged to take part in the hanging of the Greens on December 1. If more changes have to be made that day, the guides are on hand to hear about them.

Guides who do not own a costume should come in well in advance of December 5 and borrow one of Pine Grove's outfits. This applies to the hoop skirts as well. All dresses and skirts should be freshly laundered or cleaned before

that day. It is very possible that a costume may have to be worn by more than one person. The last person to wear the outfit should launder it and return it to Wisner House as soon as possible.



Mrs. Douglas Hoard is in charge of making the delicious hot mulled cider which will be served in the schoolhouse.

Anyone who wishes to help with the serving, please contact Mrs. James Burke at 682-2017. Also, ably assisting on this committee are Mrs. Richard Wright and Mrs. Russell Pickering.

Mrs. Stella Presnal, chairman of the Pot Pourri Shoppe, has been busy marking stock and putting the store in order.

There are new supplies of stationery and books, toys and commemorative pewter spoons. The Shoppe is an ideal spot to buy stocking and Christmas gifts.

Since the Shoppe room is so small, there will be another store set up in the kitchen of the office. Here will be sold the lovely leaded glass items, the hand made gifts, dolls and some of the books and stationery. Working in the store is often as much fun as guiding, and you can be certain of seeing all our visitors of that day. If this job sounds appealing, mark off the word "Guide" on the enclosed card and write in "Store-keeper".

Also, hand made items are urgently needed for the store. Take time to browse through our line of books when visiting Wisner house. We have some excellent ones.

Mrs. Margaret Ann Jackson is in charge of the entertainment and decorations in our one room school. Trimming the tree this year will be a group of Waterford Senior Citizens.

Tickets will be on sale in the school for a drawing for a cornhusk angel that will top some lucky winner's Christmas tree.

Our Quilting Guild is putting the final touches on the quilt top that will depict many county historical sites and Bicentennial logos. Members of the Guild will be doing the quilting on it during Open House.

Tickets are now being sold for the quilt, and will continue to be sold until four o'clock on December 5 when the drawing will be held.

Mrs. Mary Rachwal has been making spot mailings of raffle tickets from our membership list. If you have not been contacted and wish to purchase tickets, call Mary at 674-2301.

The Victorian Open House is drawing near - and it will be the Society's final Bicentennial fling. Let's make it a merry one! See you all on December 5.

Just wait until Spring!

Plan a tour at Pine Grove next spring- and take time to smell the flowers. The grounds at the Wisner House will be bright with color. This fall Cecil Dumbrigue, the head gardner, ably assisted by Emil Bruestle, planted 350 tulip bulbs.

A donation from Mrs. Allen Priestley was used to purchase 100 of these bulbs and Messrs. Bruestle and Dumbrigue gave 250 tulips. Cecil also donated 150 crocuses and daffodils.

The two men have planted 35 peony roots and 6 large Oriental poppies given by Mr. Clarence Lienau of Men's Garden Club of Northland. Members of Boy Scout Troop No. 17, assisted by their

leader, Lance Butler, and Cecil Dumbrigue, planted a three foot white pine tree as their special Bicentennial project. The Scouts were given a guided tour of Pine Grove following the tree planting ceremony.

The sugar maple donated in the spring by the National Women's Farm & Garden-Pontiac Branch is thriving. In early summer, Mr. Russell Gustavson donated 8 mini-roses that are brightening the plot around the National Historic Site plaque on the front lawn.

Anyone interested in making future donations of flowers, shrubs, or trees, please contact Mr. Dumbrigue at the Pine Grove office, phone 338-6732.