



The only publication dedicated to the history and heritage of Oakland County.

Vol. 35, No. 1

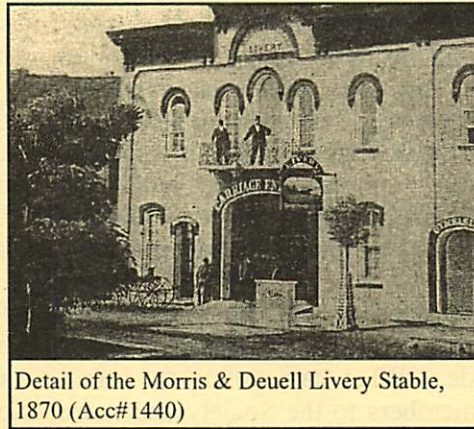
Published by THE OAKLAND COUNTY PIONEER & HISTORICAL SOCIETY  
405 OAKLAND AVENUE, PONTIAC, MICHIGAN 48342

Winter 2002

## From Our Collections: The Morris & Deuell Livery Stable

By Leslie S. Edwards

Discovered in a drawer in a small wooden cabinet was an oil painting of a building. Upon closer examination, I found that the building had the name of "Morris & Deuell Livery Stable" in an arch near the roof. More information was gleaned from checking the accession record - the painting was donated to the Society in 1958 by Marguerite Trowbridge Allen, and Joseph H. Morris is standing on the left balcony in the painting. Closer examination of the painting revealed that the artist created the painting over a photograph - this is clearly evident in the faces of the people, and in the details of the carriages.



Detail of the Morris & Deuell Livery Stable, 1870 (Acc#1440)

The earliest mention of Joseph H. Morris in our records is his marriage in 1849 to Eliza Jane Barkman. Both Joseph and Eliza were from Waterford. By 1860, the Morris family was residing in the Village of Pontiac, where Joseph had a "livery and sale stable" on Lawrence street. By 1863, Morris had formed a partnership with another livery stable owner, A. J. Boss, and had moved to a location on Saginaw street.

Nelson E. Deuell was born in Genessee County and at the age of 14 attended Clarkston schools. He later began a small livery business there, before removing to Pontiac in 1869. At that time, he and Joseph Morris became partners in a livery stable business located on Pike street at the corner of Perry. The partnership was short-lived, and in May 1871, Morris & Deuell was dissolved.

Morris and Deuell divided the stock and each opened their own livery stable. Morris continued the business at "the old stand - by the way, the finest livery building in Michigan" (the building in our painting) and made "large additions to his stock of horses and carriages."<sup>1</sup> Deuell opened a new establishment on Lawrence Street, which had formerly been a well-known stable occupied by Charles Pither. Both men, now in competition, made every effort to build up the finest livery stable in town. In late May, Morris purchased new carriages - "one of those Boston Improved Phaetons, the most comfortable covered carriage, and the most convenient for getting into and out of, yet invented, also two of those finely finished Troy built yacht top buggies."<sup>2</sup> In June, Deuell outfitted his new stable, ordering new carriages, painting the exterior and whitewashing the interior. By December, Morris' stable was called the "Champion Livery" and he bought "a beautiful span of milk white horses, one of the finest matched teams in the country; purchased of the estate of the late Dr. Clark, of Detroit."<sup>3</sup>

By April 1872, the local papers were touting the benefits of both stables. "J.H. Morris' livery, on the corner of Pike and Perry streets, is a fine building and has some good stock and carriages in it. A fine natural team of white horses is the attraction of this livery. They are as fine, a purely white team, as we can

Continued on page 6

## Letter From the President

The close of another year for our organization has come, and we can't even say that it was an easy year. A lot has been completed such as the new sign work to our location and a new cedar fence along the front of the property. I would like to thank everyone for their generous donations to the annual giving last year that made it possible to purchase the new signs, and make other repairs at the location. Also a special thank you to Mr. Vernon Kath for his donation that paid for the new cedar fence along Oakland Ave.

In the past few years we have moved at a very past in making changes in our business operations, and improvements to the location. The reason we have been able to do these things is the great board of directors that has recognized the need to improve. The new voting process has been very well accepted and praised by the general membership. Many have stated to me that they feel that they are now a more valued part of the organization. Since the tragedy of Sept. 11 the economy has taken a slight downward trend which has affected our investment returns. We know this will change soon but until the economy recovers we will be placing a freeze on all expenditures and improvements except for an emergency need.

Continued on page 2

### In this Issue

From Our Collections: The Morris & Deuell Livery Stable .....	1
Letter From the President.....	1
Society News and Views .....	2
From the Director.....	2
2002 Board of Directors.....	4
Honor Role of Donors.....	5
Historic Framy Survey .....	5
Welcome New Members.....	7
Membership Application .....	7
Calendar of Events .....	8

## Society News & Notes

### *Research Library/Archives*

In the year 2001, volunteers in the library spent many hours upgrading our township notebooks. New indexes were created and computer-generated, and we hope that eventually we can have a master index to assist researchers with cross-references. In addition, in the 1980s, a group of ladies led by **Faye Donelson**, began a project of transcribing names of Oakland County obituaries from 19<sup>th</sup> century Pontiac newspapers. This project, covering the 1880s, is now being completed by library volunteers, typed up, and put in notebooks for use. In addition, a project is also underway on a survey of the lakes in Oakland County. Thanks to **Helen Clark, Karen Krugman, Bev Lancaster, Jo Pate, and Fran Wilson** for all their help on these projects!

### *Outreach and Publicity*

Outreach and networking continues to be an important aspect of our Society. In the year 2001, our Administrative Director, **Leslie Edwards**, had the opportunity to give talks to the Rochester-Avon Historical Society, Highland Historical Society, and a graduate class on archival studies at Wayne State University. She was also a member of the United Homeowners Panel Meeting in Bloomfield Township, a panel member at a symposium on the Michigan Military Academy in Orchard Lake, and a panel member on "Detroit's Century Box Letters" at the Local History Conference in Detroit. In May, she participated in a joint workshop on Photo Preservation with archivist **Holly Teasdale** at the Rabbi Leo M. Franklin Archive at Temple Beth El. In November, she traveled to Lansing to speak on "Local History Collections in Public Libraries" at the Michigan Library Association's Conference. Each of these speaking engagements gave Leslie the opportunity to boast about the wonderful resources we have in our research library/archives, and about the programs and goals of our museum and Society.

Groups that toured the museum and library/archives included the Wixom Historical Society, Oakland Township Historical Society, the Sashabaw Plains

*Continued on page 3*

## From the Director

As we move forward and grow as an organization, we must continue to evaluate our programs and policies to provide a secure foundation on which we can operate. Collections management controls are needed in all areas of the Society to ensure the safekeeping of our valuable heritage. I want to thank all of the chairpeople for working with me and the Policies and Procedures committee in updating our procedures. I hope that in the coming year, we will continue to work together to improve our policies for the benefit of the Society. I truly believe that the future success of our Society is based on four things: preservation of our precious resources, expanded programming, outreach services and continuing efforts to make our resources available to the public, and new sources of funding - looking outside of the Society for grants and corporate support.

We need to evaluate what types of services our members expect us to provide. What can we do to attract new members to the Society and more visitors to our museum? Expanded programming could include lecture or workshop series for those interested

in local history, genealogy and preservation issues. We have already made plans to open the museum for walk-in tours. Beginning in March 2002, the Wisner mansion will be open for walk-in tours on the second Saturday of every month from 10am-1pm.

The schoolhouse is an underutilized resource. We have a collection of over 500 rare books on early education in Michigan that could be used by scholars and researchers. Increased promotion could also cultivate the use of the schoolhouse by small organizations for meetings, and we must make every effort to fill the grounds with school tours in the fall and spring months.

Funding, as in many non-profit organizations is one of the most crucial issues we face. In the past, we have been supported by membership dues, investment income, donations and some funding by the County government. I believe it is essential for us to actively seek out new sources of income in order to continue with our goal of "preservation of the past, enrichment of the future."

## From the President

*Continued*

Once again this year our two annual fund raisers were a success as well as our outreach programs that continue to grow. The continued success of these programs belongs to the chairpersons and their many volunteers for the hard work and many hours they contribute. In the past we have had only the limited support of L. Brooks Patterson and Oakland County government, but now thanks to the voters of Pontiac we hope to see a change. The city with its new mayor, Willie Payne, and County Executive, Brooks Patterson, have formed a new partnership between them that we hope will brighten the future for all of us. Also by the way we have a direct inside contact with the office of the Mayor. We hope to be able to work with the Community Development office in the next year for some possible grants for more improvements to our property.

In closing I would like to thank the membership and the board of directors for their continued support during this past year, and remember this flower will only continue to grow if we give it the tender loving care that is necessary.



SOUTH LYON, MICHIGAN.  
The Whipple House, South Lyon, ca. 1893  
(Acc# 1979.025)

# Society News & Notes

Continued

DAR, and the Student Chapter of the Society of American Archivists. Thanks to **Charles Martinez** for his assistance with some of these tours!



Director Leslie Edwards with the Student Chapter of SAA

In-house publicity includes continual updating of our web pages, particularly regarding our Society events. In the year 2001, our director redesigned our web pages expanding them to include a more concise representation of our research materials. Six finding aids are now available online, and in 2002, we hope to be able to add many more. In addition, we need to continue to create "pathfinders", or collection guides, that outline specific areas of our collections, such as schools, military, women's groups, etc. for use by researchers. Also this year, Leslie was able to meet her goal of producing four issues of the *Oakland Gazette*. Hopefully, in 2002, the Publications Committee will become a more active participant in the production of the *Gazette*. All members of the Society are encouraged to contribute articles relative to Oakland County's history for inclusion in the newsletter.

## Membership

Total membership in the Society now stands at 333. The Society gained 61 new members in 2001, many of whom joined when they came to do research in the library/archives. New levels for membership were developed this year, including one for corporate sponsors. Thanks to chairperson, **Pat Fisher**, a membership drive was held to solicit corporate sponsors, and five responded: Coats Funeral Home, Greater Pontiac Area Chamber of Commerce, Huntoon Funeral Home, Monarch Investments and Quantum Leap, Inc.

## Acquisition of Historical Materials

The Museum and Archives cannot function without continued support and donations for our collections. Acquisitions in the year 2001 consisted primarily of materials for our Archives. These included published monographs, pamphlets, research materials, family diaries and photographs. One donation of particular note was the collection of 106 Groveland Township record books donated by the Groveland Township Supervisor.

In addition, our Museum received donations of rare books and two 19<sup>th</sup> century desks for the schoolhouse, an ox yoke, hand plough and Pontiac fire alarm box for the Pioneer Museum, and several quilts and handmade blankets for our Clothing/Textiles collection. It would be impossible to list individually all of the donations we received in the past year - suffice it to say that the Society is extremely grateful for your continued support. We are hopeful that we can continue to add collections to our Archives in the form of original manuscript

materials, such as correspondence, journals, business and organizational records, and of course, photographs. It is our desire to continue to build upon the foundation that our predecessors began 128 years ago - that of preserving the history and heritage of all of Oakland County.

Thank you to the following donors for their contributions to our collections in 2001:

Gretchen Adler	Carrie Murgittroyd
Bruce Annett	Diane Needham
Bruce Benter	Gary P. Olson
Brian Bohnett	Susan Sadowski
Katherine Bolinger	Iyla M. Spelbring
Vern Burris	Margaret Stoddard
John Cohassey	Edith Wilson Sumner
Janet Davies	W.G. Sutherland
Damien Dziepak	Sally Terwilliger
Alan Feldman	Dorothy H. Vining
John F. M. Forgette	Ed Voorhees
Gaylor Forman	David and Pamela Walls
Rosemary Gallardo	Bessie Weatherston
Brian Golden	Tom and Fran Wilson
Dave Gustner	Rod and Sue Wilson
Margaret Paddock Haller	Melvin Wright
Pauline Harrison	Phyllis Wright
Motoko F. Huthwaite	
Rex Lamoreaux	Birmingham Historical Museum
Louie Lawton	Ferndale Historical Society
Richard N. Lennon	Groveland Township Supervisor
Arthur L. MacAdams	Highland Historical Society
Mary Jane Mahalek	Oakland County Geneal.Society
Charles Martinez	Piety Hill Chapter DAR
Charlotte Maybee	Rabbi Leo Franklin Archive
Marianne Morrison	

The Society maintains an ongoing acquisition program. While the Society possesses an excellent collection of artifacts, the collection of the Research Library/Archives must continually be enhanced. There is a vast amount of significant material that lies forgotten in basements and attics. With your help such materials can be found and the originals, or copies of the originals, deposited in the Society's archives for future use. Documents which tell the story of Oakland County individuals, families, farms, businesses, and organizations are most useful. We look forward to another year of adding to our collection of valuable resources.

## Policies and Procedures

The committee met a total of 16 times last year. The first objective was to meet with each committee to discuss policy and procedure in an effort to document same for any incoming members who might be interested in such activities. Hopefully, each new member will find a niche where he/she will be comfortable and find time to devote to the Society.

After meeting several times with two such committees, the committee found that a second objective of upgrading the by-laws could not be accomplished unless meetings

Continued on page 4

## Board of Directors 2002

**Amy Annett**, Waterford  
**Bruce Annett**, Waterford  
**Janice Bell**, Waterford  
**Ross Callaway**, West Bloomfield  
**Virginia Clohset**, Bloomfield Twp  
**Kathryn Daggy**, Auburn Hills  
**LaVon Delisle**, Oxford  
**Guy Duffield**, Waterford  
**Gaylor Forman**, Bloomfield Hills  
**Miriam Foxman**, Keego Harbor  
**Rosemary Gallardo**, Pontiac  
**David Hackett**, Rochester Hills  
**Rosamond Haerberle**, Waterford  
**Gil Haven**, Linden  
**Barbara Irwin**, Bloomfield Hills  
**Annalee Kennedy**, Sylvan Lake  
**Clarke Kimball**, Pontiac  
**Rex Lamoreaux**, Pontiac  
**Charles Martinez**, West Bloomfield  
**Susan Metzdorf**, Auburn Hills  
**Ruth Priestly**, Waterford  
**Virginia D. Rodgers**, Franklin  
**Constance Scafe**, Clarkston  
**Gale Scafe**, Clarkston  
**Doris Smith**, Pontiac  
**Richard Stamps**, Rochester  
**Michael Willis**, Pontiac  
**Fran Wilson**, Bloomfield  
**Ellen Zehnder**, Clarkston  
**Michael Zehnder**, Clarkston  
**Rodger Zeller**, Waterford

## Society News & Notes

*Continued*

with standing committees were put on hold and focus was placed on amending the by-laws. Recommendations were presented to the membership for review prior to the Annual Meeting.

The Society has done a fantastic job over the years collecting and preserving the history of our county, and maintaining Pine Grove Historical Museum. As the Society moves forward and continues to grow as an organization, we must constantly re-evaluate our programs and policies to provide a secure foundation on which we can operate. Collections management controls are needed in all areas of the Society to ensure the safekeeping of our valuable heritage.

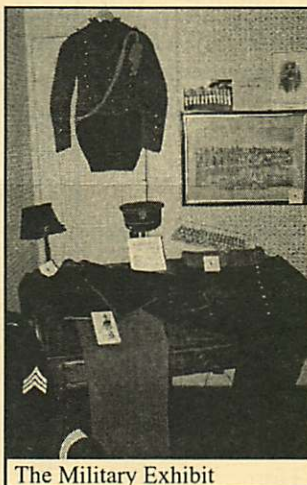
## Collections Management

Collections management continues to be a crucial issue for the Society. Under the supervision of our Director, a graduate student from the Wayne State University archives program, **Mark Gnaster** processed manuscript collections. In addition, the Society is particularly fortunate to have had the services of three interns from Oakland University - **Jamie Karl**, **Birgit Meyer** and **Megan Callewaert**. Jamie and Megan continue to inventory and catalog artifacts using our computerized collections management software. To date, we have cataloged 225 objects, 80 archival or manuscript materials, 325 photographs and 65 library books. This may seem like a small number, considering that we probably have over 200,000 artifacts, 500 manuscript collections, and over 4000 photographs, not to mention our collection of scrapbooks, library books, newspapers, pamphlets, and rare books.

## Exhibits

In the year 2001, many more new exhibits were on display at Pine Grove.

Exhibits seem to go hand-in-hand with collections management, as research of the artifacts is crucial to interpretation of the exhibits, and consequently, for use by the tour guides. This year, we were fortunate to have our student interns from Oakland University put together some outstanding exhibits. These included displays on the art of lace-making, early education in Oakland County and Michigan, a military exhibit featuring newly discovered artifacts, and a display of some of our Native American collection. Thanks to Wayne State University students, **Teresa Ehinger** and **Ann Rock**, for assisting with these exhibits.



The Military Exhibit

## Wisner Mansion

During the past year, the house has undergone a transformation. Woodwork, including trim and floors, were scrubbed and the drapes that adorn the windows were cleaned and re-hung. Research was completed on many of the artifacts and on the location of some of these when the Wisner family resided in the home. Per the Society's Master Plan, the old "toy room" was turned into an area for rotating exhibits to highlight areas of our collections. Pieces of furniture or toys needing repair were placed in storage until the necessary funds can be raised to repair them. Closets were cleaned and organized, and the linens have been gathered and are ready to be inventoried. Care must be taken in cleaning historic furniture, and in maintaining a constant temperature and humidity in the house. Much work continues to be done, as maintaining the house is a big responsibility. Thanks to **Marguerite Johnson** for the many hours that she gave towards bringing a sparkle back into the house for visitors to enjoy.

## Gift Shop

A complete inventory of shop items was completed in November by volunteers **Kitty Daggy**, **Nancy Duffield**, **Pauline Harrison**. **LaVon Delisle** and **Barbara Irwin** assisted by completing the inventory of all of the Christmas items. The shop continues to raise funds for the Society through sales resulting from school and group tours, as well as our Society events.

## Maintenance

As you can imagine, maintenance of a museum complex such as Pine Grove

*Continued on page 6*



The Lace Exhibit

# Honor Roll of Donors 2001

## Corporate, Foundation and Civic Support

### Gifts of \$100 to \$250

Great Lakes Crossing  
Quantum Leap, Inc.

### Gifts of Under \$100

Alpha Accounting  
Daughters of Founders and Patriots of America  
Greater Pontiac Area Chamber of Commerce  
Michigan Farm and Garden Foundation  
State Retired Employees Association

### InKind Contributions

Anonymous - library supplies  
Bruce Annett, Jr. - museum signs  
Creative Signs & Designs, Pontiac  
Goldner-Walsh Landscaping  
Guy Duffield - maintenance supplies  
Henk Studios - flowers  
Home Depot, Madison Heights Store 2731  
Marguerite Johnson - Victorian Christmas  
Vernon Kath - new fence  
Karen Krugman - technology  
Robert and Ellen Reynnells - gift shoppe items  
Shell Homes - repairs  
Starbucks Coffee, Royal Oak Store - Main Street  
Westborn Market, Berkley  
Mike and Gayle Willis - Ice Cream Social

## Individual Donors

We have tried to acknowledge all those who have made financial contributions to the Society in the past year. We apologize in advance for any omissions. Please call us at (248) 338-6732 with any corrections.

### Gifts of \$5000 or more

Ed and Gretchen Adler

### Gifts of \$250 to \$499

Virginia Debenham Rodgers  
Faye Donelson

### Gifts of \$100 to \$249

Judge and Betty Adams  
Bruce and Amy Annett  
Keith and Barbara Bennett  
Ross Callaway  
Guy and Nancy Duffield  
Vivian Eddy  
David and Marion Hackett  
Walter Whitmer

### Gifts of \$50 to \$99

Richard Balmer  
Brian Golden  
John and Barbara Irwin  
William and Jean Kroger  
Marjorie Pflug  
John Riley  
Elizabeth Ross  
Charles Steeber

### Gifts of under \$50

Elizabeth Quarton Hoard  
Margaret Hutchinson  
Ann Liimatta  
Katherine Morton  
Priscilla Parr  
Thelma Plympton  
Robert and Ellen Reynnells  
Nancy Schermerhorn  
Mary Wessels

There are many more donors who have contributed artifacts for our collections, or items to be used at our Ice Cream Social and Victorian Christmas Open House. We greatly appreciate *every* one of the donations we have received in the past year. Your support is invaluable.

## Historic Frame Survey

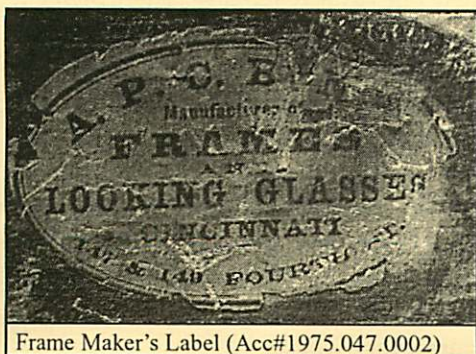
By Teresa Ehinger

The primary objective of this survey was to ascertain frame style, period (which included methods of construction), and provenance of the historic picture frames at the museum. To streamline this process, a frame survey form was designed and used to assess each frame, and ultimately assist museum staff in cataloging each frame. The survey form included condition/maintenance notes in order to help the museum address any

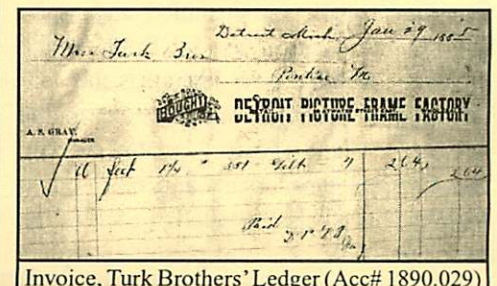
future conservation, repair or restoration needs. Finally, in addition to the written information, a digital image of a corner of each frame was taken to attach to each cataloged record. The data gathered and cataloged will be used by the museum to assist in collections management and exhibit presentation.

My favorite frames were those that were stamped with the maker's name on the back of the frame, usually on the wood backing. Being a framer myself, these marks and labels gave the project a personal dimension. One particular set of frames contained partial labels of frame maker A.P.C. Bonte of Cincinnati. The information from the labels were sent to the Cincinnati Historical Society, and the frames were positively identified as being made in 1869.

The most common style of frame in the collection is the "federal-style" frame from the late 19<sup>th</sup> century. These were manufactured, made of wood only, and came in every size, even as shadow box frames. They have a very simple streamlined design, with no ornamentation or gilding. They truly give the collection its historically "American" nature. Several of the Lincoln portraits are in these frames. Other styles in the collection include Art Nouveau, Eastlake, Folk Art, Rustic and contemporary modern.



Frame Maker's Label (Acc#1975.047.0002)



Invoice, Turk Brothers' Ledger (Acc# 1890.029)

## From Our Collections

Continued from page 1

remember to have seen. This is the office of the omnibus line and baggage express of the city.



Nelson E. Deuell

“The popular and well known livery of N.E. Duell, on Lawrence street, a few doors west of National block, is a well ordered institution. Mr. Deuell keeps one of those beautiful silver plated hearses, of Crane, Breed & Co’s make, of Cincinnati, one of the finest carriages of the kind in the state. “Nel” has a fine lot of single and double carriages, and seems to make them generally useful.”<sup>4</sup>

However, by September of the same year, the duo again made changes in the livery business. The “Champion Stable,” formerly occupied by Morris, now became the home of Deuell, who moved his Lawrence Street Livery and purchased “the beautiful span of white horses, the Landau, and the large covered sleigh, the cream of his livery stock.”<sup>5</sup> The rest of Morris’ stock, including a large array of stage coaches, was auctioned off, drawing large numbers of buyers to the city. Only a week later, Morris was refitting and fixing up a ware house in the rear of Bond’s gun store, in order to start a “first-class sale stable.”

However, by 1874, Joseph H. Morris had removed to Detroit and set up a livery on Woodbridge street in Detroit, in the rear of the Biddle House. At the time he took possession of the space, it was a “filthy, ill-ventilated, unwholesome place for man or beast.”<sup>6</sup> Morris engaged carpenters, painters and white-washers and turned the building into a “sweet, better ventilated, more commodious and comfortable livery barn.”<sup>7</sup> The building had three floors, with storage for carriages, ventilated stalls for the horses, and a third story for hay and feed. Morris had finally found his place in Detroit.

Meanwhile, Deuell continued to be a very successful stable owner in the former Morris & Deuell livery. His business continued to grow and by 1891, the “Pike Street Livery Stable” as it was known, was the largest and most popular in the city.

Described as the most complete livery in this area of the state, the stable measured 80x80 feet, and had a stall room with



Pike Street Livery Stable, ca. 1897

accommodations for 40 horses. The horses were well-fed and groomed, and “gentle horses” could even be had for the use of “ladies or invalids”. The stable carried a large supply of carriages and other vehicles including buggies, hacks, surreys, landaus, picnic wagons and busses. In addition, Deuell also offered the finest outfit for weddings and funerals, and not only furnished the best teams, but the prices were reasonable, and he was considered a genial and courteous gentleman.<sup>8</sup> Nelson Deuell died in 1912 and is buried in Oak Hill Cemetery.

The painting of the Morris & Deuell Livery Stable, once freed from its hiding place, led to the research of another Society artifact and led to an interesting story of two men and a vanished industry in Oakland County. The research also enabled me to identify a very precise date (1870) for the original photograph, as the two men were only in business together for a little over a year. The painting has been archivally framed, and now hangs in the office of the research library/archives.

1 *Pontiac Gazette*, May 5, 1871.

2 *Pontiac Gazette*, May 26, 1871.

3 *Pontiac Gazette*, Dec 8, 1871, p.5, col.1.

4 *Pontiac Weekly Gazette*, April 19, 1872.

5 *Pontiac Weekly Gazette*, Sept 13, 1872.

6 *Pontiac Gazette*, Feb 13, 1874.

7 *Ibid.*

8 *The Oakland County Post*, Nov 6, 1891.

## Society News & Notes

Continued

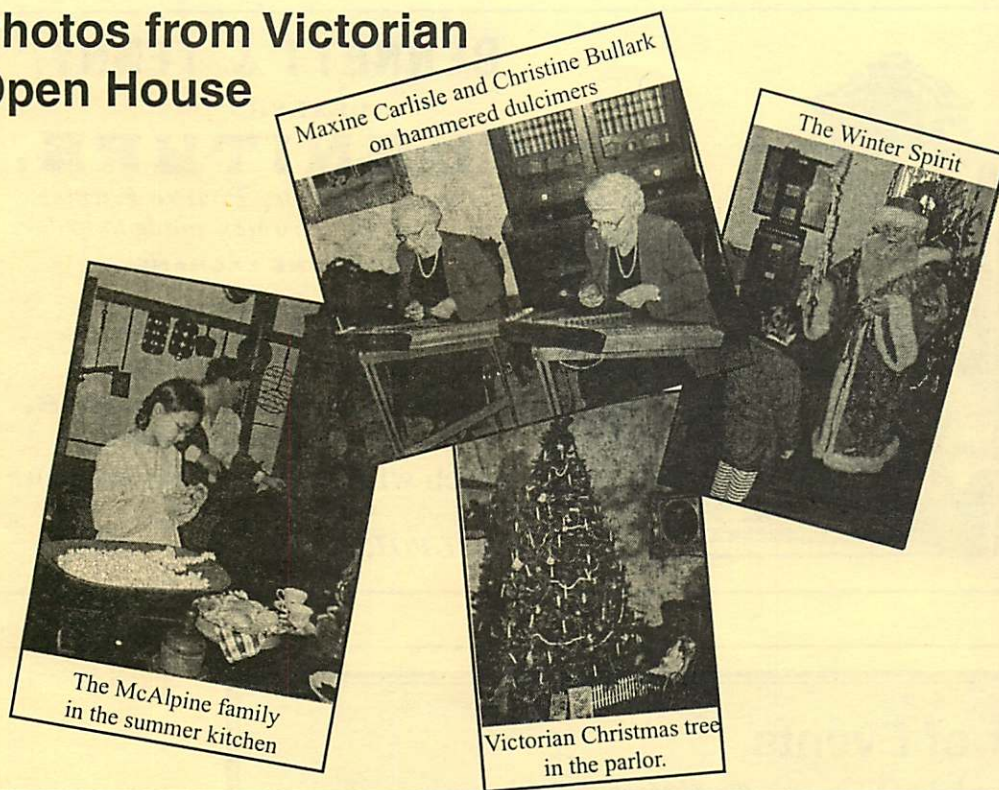
is a monumental task. In 2001, we received a new cedar shake roof on the summer kitchen and outhouse. Most of this was funded by insurance monies we received from storm damage done to the roof. Our new signs were installed and make a welcome addition to the front of the property. Another new feature is the split rail cedar fence that was donated to the Society by **Vernon Kath**. Updated security measures were necessary and new sensor monitors have been installed in each of the buildings. Electrical and plumbing repairs were made, and **Guy Duffield** installed

programmable digital thermostats in each building to assist with environmental controls for our collections.

We experienced vandalism twice to the property this past year. Once, the vandals attempted to enter the Carriage House but only succeeded in prying open the outer door and breaking the two-ply plate glass window. They also broke into the shed and stole many tools that had been stored there. The second vandalism occurred when our new, small “museum entrance” sign was broken into several pieces. It may have

even occurred when a car backed into it. When we inquired about replacing the sign, we discovered it would cost \$800 (!!) for a new one, so new member, **Keith Bennett**, found a way to repair and repaint it, and it will soon grace the entrance to the drive once again. Needless to say, it is a *huge* job to maintain the property and we could not begin to manage it without the help of our volunteers. Thanks to **Gale Scafe** for keeping the grounds mowed and the mowers in working order, and to **Ann Liimatta** for taking the trash to the curb every week!

# Photos from Victorian Open House



## Board of Directors

### President

Michael E. Willis

### 1st Vice President

Charles Martinez

### 2nd Vice President

Clarke Kimball

### Treasurer

Amy Annett

### Secretary

Kathryn Daggy

## Staff

### Administrative Director/Editor

Leslie S. Edwards

### Manuscripts Librarian

Virginia Clohset

### Research Librarians

Jo Pate

Fran Wilson

## Welcome New Members!

Norm and Cynthia Barkeley  
Keith and Barbara Bennett  
Brian Bohnett  
Katherine Bolinger  
Jack Bressler  
Fred Brownson  
Sandra Butler  
Carolyn Clark  
David Decker  
Beverly Degraw  
Jane Emerson

Joyce Emerson  
Patricia Franks  
Rosemary Gallardo  
Kalleen Hotchkiss  
David Kimball  
Richard McIntyre  
Carrie Murgittroyd  
John and Martha Pasternak  
Therese Rich  
William Rockwell  
Bill Schmidt

Stephen Sutton  
Lauren Tossey  
Jay Turner  
Edward Voorhees  
C. Thomas Wilson

Bloomfield Township Public Library  
Coats Funeral Home  
Huntoon Funeral Home  
Monarch Investments

## MEMBERSHIP APPLICATION

Oakland County Pioneer & Historical Society  
405 Oakland Avenue • Pontiac, Michigan 48342 • (248) 338-6732

Yes, I'd/We'd like to join OCPHS!

Name \_\_\_\_\_  
Street \_\_\_\_\_ Apt. No. \_\_\_\_\_  
City/State \_\_\_\_\_ Zip \_\_\_\_\_  
Telephone \_\_\_\_\_  
Email \_\_\_\_\_  
 Check here if gift membership from \_\_\_\_\_

Memberships are for one year.

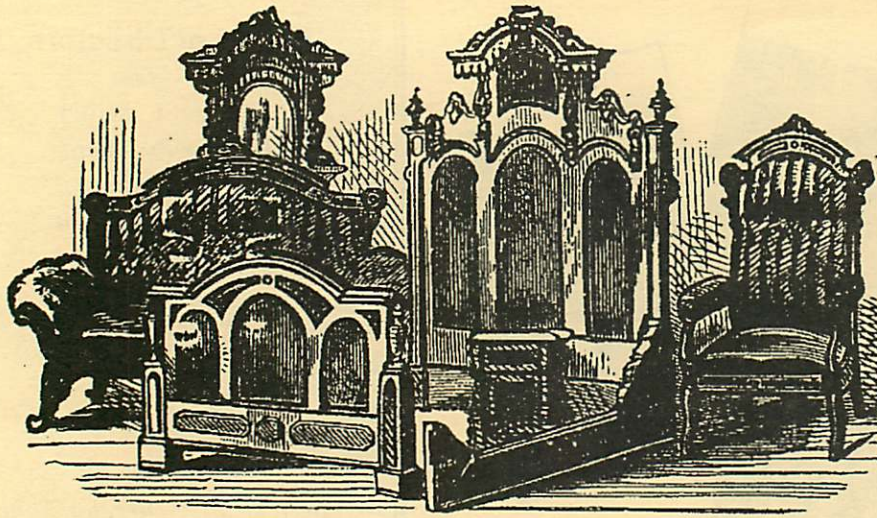
- Student..... \$15.00
- Senior (65 & Over) ..... \$15.00
- Individual..... \$20.00
- Couple..... \$35.00
- Family (Parents & Children)..... \$50.00
- Non-Profit Organization..... \$20.00
- Patron..... \$75.00
- Benefactor..... \$150.00
- Corporate Sponsor..... \$500.00

Check desired membership category and enclose this application with check or money order made payable to:

Oakland County Pioneer & Historical Society

(Send to the above address)

Contributions and bequests to the Society, including memorials, assure the continuing resotation of Society properties and promotion of Oakland County's irreplaceable historical heritage. As charitable donations, such contributions allow the donor to take income tax deductions.



**BENNETT & TENNY,**  
DEALERS IN  
**FURNITURE,**

*Mirrors, Brackets, Picture Frames,  
&c. Picture Frames made to order.*

TELEPHONE EXCHANGE.

**UNDERTAKERS.**

We also have a full line of  
**Undertakers' Goods,**  
and a Fine New Hearse,  
which will be supplied at reason-  
able rates.

MILFORD, - - MICH.

Advertisement, 1886 Oakland County Directory

**Calendar of Events**

Wednesday, March 20	Board Meeting.....	9:30 am
Saturday, April 20	Board Meeting.....	9:30 am
Wednesday, May 15	Board Meeting.....	9:30 am
Saturday, June 15	Board Meeting.....	9:30 am
Wednesday, July 17	Board Meeting.....	9:30 am



U.S. Postage  
**PAID**  
Permit No. 70  
Pontiac, MI  
Non-Profit Org.

405 Oakland Avenue  
Pontiac, MI 48342  
(248) 338-6732  
(248) 338-6731 Fax

ocphs@wwnet.net

*Preservation of the  
Past for the Enrichment  
of Future Generations*

Internet address:  
<http://wwnet.net/~ocphs/index.html>